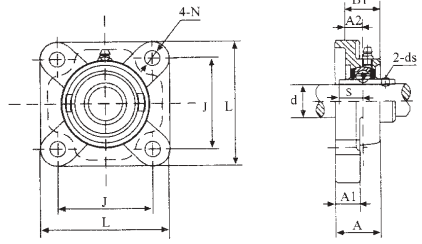




Bearing

# Square Flange Cast Housing UCF 200



Bearing Number	Shaft Dia. d		Dimensions (mm)										Bolt Size	Bearing Number	Housing No.	Weight kg	
	in	mm	L	J	A2	A1	A	B1	N	S	d <sub>s</sub>						
UCF 201		12													UC 201		
201-8	1/2														201-8		
202-9	9/16	15													202-9	F 203	0.59
202															202		
202-10	5/8	17	76	54	15	11	25.5	30.9	11.5	11.5		1/4-28 UNF	M10	202-10			
203												M5 x 0.8		203			
203-11	11/16													203-11			
UCF 204-12	3/4	20	86	64	15	11	25.5	33.3	11.5	12.7		1/4-28 UNF	M10	UC 204-12	F 204	0.61	
204												M6 x 1		204			
UCF 205-14	7/8	25	95	70	16	13	27	35.7	11.5	14.3		1/4-28 UNF	M10	UC 205-14	F 205	0.80	
205-15	15/16											M6 X 1		205-15			
205														205			
205-16	1													205-16			
UCF 206-18	1-1/8	30	108	83	18	13	31	40.2	11.5	15.9		1/4-28 UNF	M10	UC 206-18	F 206	1.0	
206														206			
206-19	1-3/16													206-19			
206-20	1-1/4													206-20			
UCF 207-20	1-3/4	35	117	92	19	15	34	44.4	14	17.5		5/16-24 UNF	M12	UC 207-20	F 207	1.8	
207-21	1-5/8											M8 x 1		207-21			
207-22	1-3/8													207-22			
207														207			
207-23	1-7/16													207-23			
UCF 208-24	1-1/2	40	130	102	21	15	36	51.2	14	19		5/16-24 UNF	M12	UC 208-24	F 208	1.8	
208-25	1-9/16											M8 x 1		208-25			
208														208			
UCF 209-26	1-5/8	45	137	105	22	16	38	52.2	16	19		5/16-24 UNF	M14	UC 209-26	P 209	2.2	
209-27	1-11/16											M8 x 1		209-27			
209-28	1-3/4													209-28			
209														209			
UCF 210-30	1-7/8	50	143	111	22	16	40	54.6	18	19		3/8-24 UNF	M16	UC 210-30	F 210	2.4	
210-31	1-15/16											M10 x 1.25		210-31			
210														210			
210-32	2													210-32			
UCF 211-30	2	55	162	130	25	18	43	58.4	18	22.2		3/8-24 UNF	M16	UC 211-30	F 212	4.2	
211-34	2-1/8											M10 x 1.25		211-34			
211														211			
211-35	2-3/16													211-35			
UCF 212-36	2-1/4	60	175	143	29	18	48	68.7	18	25.4		3/8-24 UNF	M16	UC 212-36	F 212	4.2	
212-37	2-5/16											M10 X 1.25		212-37			
212														212			
212-38	2-3/8													212-38			
212-39	2-7/16													212-39			
UCF 213-40	2-1/2	65	187	149	30	20	50	69.7	19	25.4		3/8-24 UNF	M16	UC 213-40	F 213	5.3	
213												M10 x 1.225		213			
213-43	2-11/16													213-43			
UCF 214-44	2-3/4	70	193	152	31	24	54	75.4	19	30.2		7/16-20 UNF	M16	UC 214-44	F 214	5.9	
214												M12 x 1.25		214			
UCF 215-44	2-3/4	75	200	159	34	24	56	78.5	23	33.3		7/16-20 UNF	M16	UC 215-44	F 215	6.3	
215-47	2-15/16											M12 x 1.25		215-47			
215														215			
215-48	3													215-48			
UCF 216		80										7/16-20 UNF		UC 216	F 216	7.3	
216-52	3-1/4		208	165	34	24	58	83.3	23	33.3		M12 x 1.25	M20	216-52			
UCF 217-52	3-1/4	85	220	175	36	26	63	87.6	23	34.1		7/16-20 UNF	M20	UC 217-52	F 217	8.9	
217												M12 x 1.25		217			
UCF 218-56	3-1/2	90	235	187	40	26	68	96.3	23	39.7		7/16-20 UNF	M20	UC 218-56	F 218	11.6	
218												M12 x 1.25		218			

Ball Bearing Units