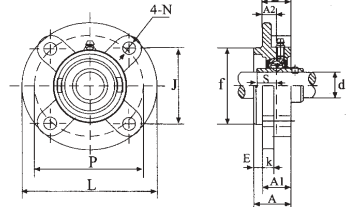




# Circular Flange Cast Housing UCFC 200

UCFC200



Bearing Number	Shaft Dia. d		Dimensions (mm)													Bolt Size	Bearing Number	Housing No.	Weight kg		
	in	mm	L	P	A2	A1	A	j	k	f	J	N	S	B							
UCFC 201 201-8 202-9 202 202-10 203 203-11	1/2 9/16 5/8 11/16	12 15 17																	UC 201 201-8 202-9 202-10 203 203-11	FC203	0.76
UCFC 204-12 204	3/4	20	100	78	10	20.5	25.5	5	6	62	55.1	11.5	12.7	28.3	M10			UC 204-12 204	FC 205	0.76	
UCFC 205-14 205-15 205 205-16	7/8 15/16 1 1	25	115	90	10	21	27	6	7	70	63.6	12	14.3	29.7	M10			UC 205-14 202-15 205 205-16	FC 205	0.96	
UCFC 206-18 206 206-19 206-20	1-1/8 1-3/16 1-1/4 1-1/4	30	125	100	10	23	31	8	8	80	70.7	12	15.9	32.2	M10			UC 206-18 206 206-19 206-20	FC 206	1.3	
UCFC 207-20 207-21 207-22 207 207-23	1-1/4 1-5/16 1-3/8 1-7/16	35	135	110	11	26	34	8	9	90	77.8	14	17.5	36.4	M12			UC 207-20 207-21 207-22 207 207-23	FC 207	1.7	
UCFC 208-24 208-25 208	1-1/2 1-9/16 1-1/2	40	145	120	11	26	36	10	9	100	84.8	14	19	41.2	M12			UC 208-24 208-25 208	FC 208	2.0	
UCFC 209-26 209-27 209-28 209	1-5/8 1-11/16 1-3/4 1-3/4	45	160	132	10	26	38	12	10	105	93.3	16	19	40.2	M14			UC 209-26 209-27 209-28 209	FC 209	2.7	
UCFC 210-30 210-31 210 210-32	1-7/8 1-15/16 2 2	50	165	138	10	28	40	12	14	110	97.6	16	19	42.6	M14			UC 210-30 210-31 210 210-32	FC 210	2.9	
UCFC 211-32 211-34 211 211-35	2 2-1/8 2-3/16 2-3/16	55	185	150	13	30	43	12	15	125	106.1	19	22.2	46.4	M16			UC 211-32 211-34 211 211-35	FC 211	4.2	
UCFC 212-36 212-37 212 212-38 212-39	2-1/4 2-9/16 2-3/8 2-7/16	60	195	160	17	36	48	12	15	135	113.1	19	25.4	56.7	M16			UC 212-36 212-37 212 212-38 212-39	FC 212	5.0	
UCFC 213-40 213 213-43	2-1/2 2-11/16 2-3/4	65	205	170	16	36	50	14	15	145	120.2	19	25.4	55.7	M16			UC 213-40 213 213-43	FC 213	5.7	
UCFC 214-44 214	2-3/4 2-3/4	70	215	177	17	40	54	14	18	150	125.1	19	30.2	61.4	M16			UC 214-44 214	FC 214	6.8	
UCFC 215-44 215-47 215 215-48	2-3/4 2-11/16 3 3	75	220	184	18	40	56	16	18	160	130.1	19	33.3	62.5	M16			UC 215-44 215-47 215 215-48	FC 215	7.2	
UCFC 216 216-52	3-1/4 3-1/4	80	240	200	18	42	58	16	18	170	141.4	23	33.3	67.3	M20			UC 216 216-52	FC 216	8.7	
UCFC 217-52 217	3-1/4 3-1/4	85	250	208	18	42	63	18	20	180	147.1	23	34.1	69.6	M20			UC 217-52 217	FC 217	10.3	
UCFC 218-56 218	3-1/2	90	265	220	22	50	68	18	20	190	155.5	23	39.7	78.3	M20			UC 218-56 218	FC 218	13.5	

Ball Bearing Units