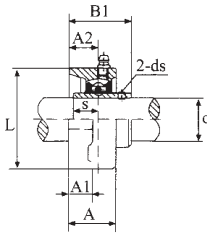
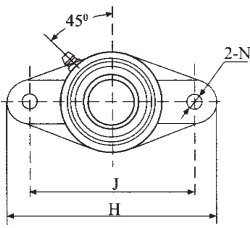


UCFL200



Over Flange Cast Housing UCFL 200

Bearing Number	Shaft Dia. d		Dimensions (mm)											Bolt Size	Bearing Number	Housing No.	Weight kg
	in	mm	H	L	J	A2	A1	A	B1	N	S	d _s					
UCFL 201 201-8 202-9 202 202-10 203 203-11	1/2 9/16 5/8 11/16	12 15	99 17	76.5	57	15	11	25.5	30.9	11.5	11.5	1/4-28 UNF	M10 M5 x 0.8	UC 201 201-8 202-9 202 202-10 203-11	FL203 203	0.45	
UCFL 204-12 204	3/4	20	113	90	60	15	11	25.5	33.3	11.5	12.7	1/4-28 UNF M6 x 1	M10	UC 204-12 204	FL204	0.5	
UCFL 205-14 205-15 205 205-16	7/8 15/16 1	25	130	99	68	16	13	27	35.8	11.5	14.3	1/4-28 UNF M6 x 1	M10	UC 205-14 205-15 205 205-16	FL205	0.6	
UCFL 206-18 206 206-19 206-20	1-1/8 1-9/16 1-1/4	30	148	117	80	18	13	31	40.2	11.5	15.9	1/4-28 UNF M6 x 1	M10	UC 206-18 206 206-19 206-20	FL206	0.9	
UCFL 207-20 207-21 207-22 207 207-23	1-1/4 1-5/8 1--3/8 1-7/8	35	161	130	90	19	14	34	44.4	14	17.5	5/16-24 UNF M8 x 1	M12	UC 207-20 207-21 207-22 207 207-23	FL207	1.2	
UCFL 208-24 208-25 208	1-1/2 1-9/16	40	175	144	100	21	14	36	51.2	14	19	5/16-24 UNF M8 x 1	M12	UC 208-24 208-25 208	FL208	1.6	
UCFL 209-26 209-27 209-28 209	1-5/8 1-3/4 1-3/4	45	188	148	108	22	16	38	52.2	18	19	5/16-24 UNF M8 x 1	M16	UC 209-26 209-27 209-28 209	FL 209	1.9	
UCFL 210-30 210-31 210 210-32	1-7/8 1-15/16 2	50	197	157	115	22	16	40	54.6	18	19	3/8-24 UNF M10 x 1.25	M16	UC 210-30 210-31 210 210-32	FL210	2.2	
UCFL 211-32 211-34 211	2 2-3/8 211-35 2-3/16	55	224	184	130	25	18	43	58.4	18	22.2	3/8-24 UNF M10 x 1.25	M16	UC 211-32 212-37 211	FL 211 211-35	3.1	
UCFL 212-36 212-37 212 212-38 212-39	2-1/4 2-9/16 2-3/8 2-7/16	60	250	202	140	29	18	48	68.7	18	25.4	3/8-24 UNF M10 x 1.25	M16	UC 212-36 212-37 212 212-38 212-39	FL212	4	
UCFL 213-40 213 213-43	2-1/2 2-11/16	65	258	210	155	30	22	50	69.7	23	25.4	7/16-20 UNF M12 x 1.25	M20	UC 213-40 213 213-43	FL213	5	
UCFL 214-44 214	2-3/4	70	265	216	160	31	22	54	75.4	23	30.2	7/16-20 UNF M12 x 1.25	M20	UC 214-44 214	FL214	5.6	
UCFL 215-44 215-47 215 215-48	2-3/4 2-15/16 3-1/4	75	272	225	165	34	22	56	78.5	23	33.3	7/16-20 UNF M12 x 1.25	M20	UC 215-44 215-47 215 215-48	FL215	6.2	
UCFL 216 216-52	3-1/4	80	290	233	180	34	22	58	83.3	25	33.3	7/16-20 UNF M12 x 1.25	M22	UC 216 216-52	FL216	7.8	
UCFL 217-52 217	3-1/4	85	305	248	190	36	24	63	87.6	25	34.1	7/16-20 UNF M12 x 1.25	M22	UC 217-52 217	FL217	9.8	
UCFL 218-56 218	3-1/2	90	320	265	205	40	24	68	96.3	25	39.7	7/16-20 UNF M12 x 1.25	M22	UC 218-56 218	FL218	12.4	